

Magnetic Contact Switches

SF-3014C/J

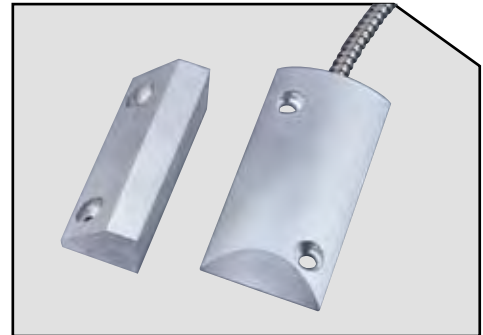
Spect Sheet



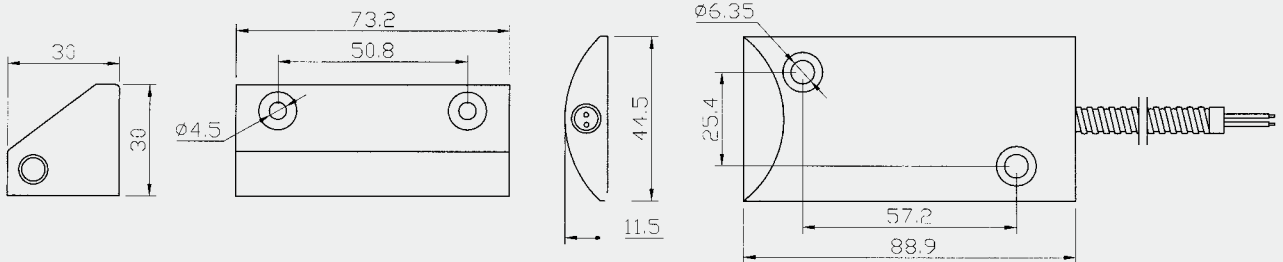
Specification:

- * Low Cost.
- * Heavy duty aluminum housing.
- * Extruded aluminum casings for harsh environments.
- * Wire: #22AWG with 22" armored cable.
- * Longer cable available on request.
- * Switches or magnets are available separately.
- * Jacket cable available: BSD3014-J.
- ** Optional "L" bracket.
- * Resistor, diode and supervisory loop available on request.

Overhead Door Contact



Dimension (mm):



MAGNET

SWITCH

Order Information:

Part Number	Loop Type	Reed Form	Closed Gap Inch/mm	Departure Gap Inch/mm (Ohms)	Maximum Initial Contact Resistance (W)	Maximum Contact Rating (VDC/VAC)	Maximum Switching Voltage (A)	Maximum Switching Current
SF-3014J	Closed	N/O	2.95(75)	3.18(80)	0.150	7.5	100	0.4
SF-3014C	Closed&Open	SPDT	2 1/2 (65)		0.150	3	30	0.2

*These magnetic contact switches shall be installed so that a door or other movable opening cannot be opened more than 2 inches (51 mm) without initiating an alarm. switches exceeding 2 inches can not be installed per UL681-teh standard for installation and Classification of Burglar and Holdup Alarm.